

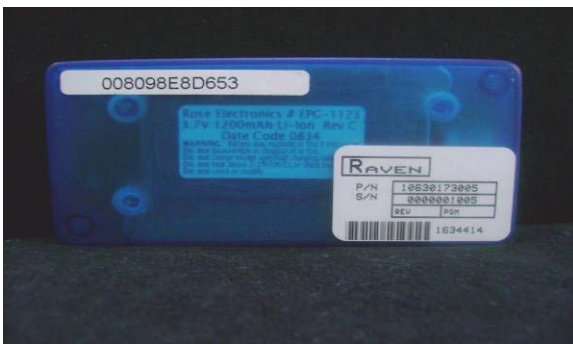
1. Contents in the Box

- BPI – Bluetooth Pilot Interface
- 6’ AIS to BPI cable
- 6” AIS to BPI cable
- AC to USB International Adapter
- USB Type A to mini-B cable



2. Install Hardware

- On the Bluetooth Connection Manager, if you already have a Raven-BPI profile, right click on it and delete it.
- Turn the BPI On and refer to the LED status as mentioned in the adjacent column.
- On the bluetooth connection manager of your computer, scan and find a device named ‘Raven-BPI’ and connect to it.
- The default pass code is ‘12345’.



3. LED states

The BPI has 4 LED’s with the following meanings:

Charging (Yellow LED)

Solid.....battery is charging
 Off.....battery is fully charged or external power via USB cable is present.

AIS Data (Green LED)

Flash Codes..3 – receiving AIS data
 2 – in loopback mode
 1 – searching for data

Solid.....receiving AIS data
 Off.....battery discharged or no activity

Notes:

- 1) AIS data must stop for 10 seconds for solid to change to blinking.
- 2) Refer to the BPI Operational Manual for BPI message, ‘Query PPI state’, to determine details of mis-wiring.

Bluetooth (Blue LED)

Flash Codes..3 – initializing
 2 – waiting for pairing with host device
 1 – searching for data

Solid.....receiving AIS data
 Off.....battery discharged or no activity

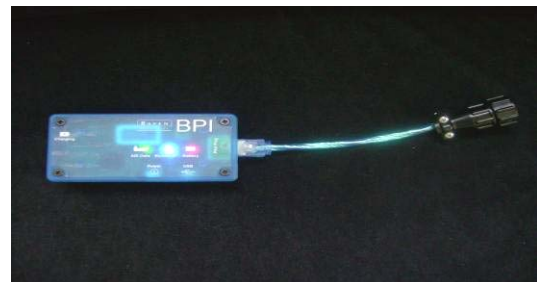
Battery (Red LED)

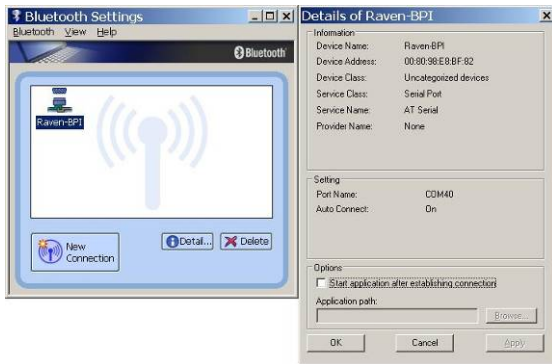
Flash Codes..2 – battery communications error
 1 – battery charge is low

Solid.....battery charge in operating range
 Off.....battery is discharged or switch is off

4. Set up

- Once you connect to the BPI, make note of the COM port number assigned to the BPI.
- Connect the ‘AIS to BPI’ cable with one end into the BPI and the other end going into an AIS data Source.
- Start your charting program, such as Raven WheelHouse II program and select the COM port assigned to the BPI for AIS data.





6. Contact Information

You have successfully finished installing the BPI. In case of Questions, Queries and Comments,

Raven Industries
1400 Summit Drive, Suite 700
Austin, TX – 78728

Voice: 1-(800) 460-2167 Option 4.

Fax : 512-238-1135

Email: MarineSupport@ravenind.com

5. Charging

- You can charge the BPI using a
 - USB Type A to mini-B cable – Fig(a)
 - AC to USB mini-B cable – Fig(b)
- Once fully charged (typically 1.5-2hrs) the rechargeable battery on the BPI supports 20+ hours of operation.
- If the Bluetooth link fails, the USB Type A to mini-B cable can be used to make a hard-wired connection.



Fig(a)



Fig(b)